

8 7 6 5 4 3 2 1

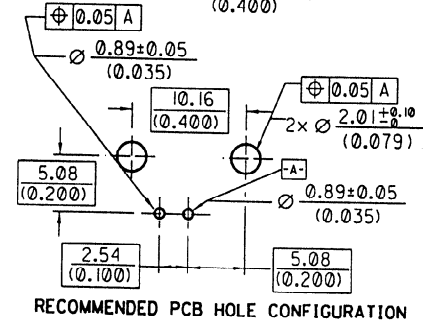
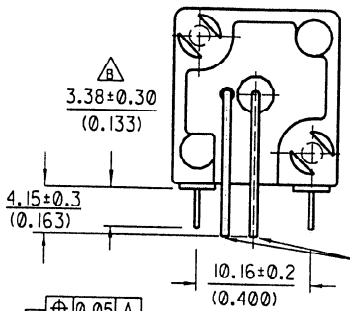
ENG. NO SDA-73101-0040

EDP NO.

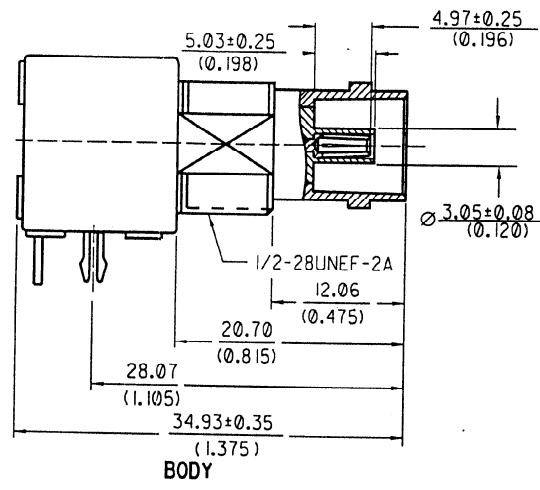
SIMILAR ITEM

CADFILE NO. S10100240

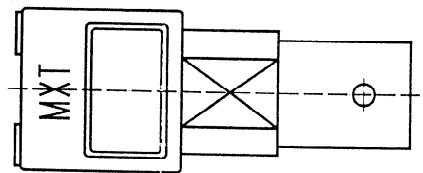
DO NOT SCALE DRAWING



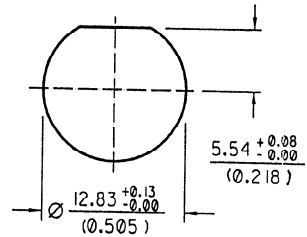
RECOMMENDED PCB HOLE CONFIGURATION



BODY



TOP VIEW



RECOMMENDED MOUNTING HOLE
 MAXIMUM PANEL THICKNESS: $\frac{5.40}{(0.216)}$
 RECOMMENDED MOUNTING TORQUE:
 12 INCH-POUNDS MAX.

CONSTRUCTION:
 BODY-----ZINC ALLOY
 CENTER CONTACT---PHOSPHOR BRONZE
 INSULATOR-----POLYPROPYLENE (94V2)
 BOARD LOCK-----PHOSPHOR BRONZE
 SOLDER TAIL-----COPPER OVER STEEL

MATERIALS AND FINISH:
 BODY-----NICKEL PLATING
 CENTER CONTACT---GOLD PLATING (10 μ)
 SOLDER TAIL-----TIN PLATING
 BOARD LOCK-----TIN PLATING

MECHANICAL AND ELECTRICAL CHARACTERISTICS:
 PER PRODUCT SPECIFICATION PS-73598-0051

MATERIALS AND FINISH:
 PER PRODUCT SPECIFICATION PS-73598-0051

PACKAGING:
 TRAY

MATERIAL : SEE NOTES	
FINISH : SEE NOTES	
SCALE :	UNIT : mm(INCH)
B RIM 844	960381
A2 DIMENSION CHANGE 798	960429
A1 TOOLING RELEASE 771	960319
LTR REVISION RECORD ECH OR DATE	APPR'D BY :
STANDARD ITEM <input type="checkbox"/> YES <input checked="" type="checkbox"/> NO	
SHEET 1 OF 1	

MOLEX
TAIWAN LTD.
(R.F. DIVISION)

GENERAL TOLERANCES
 ANGLE : ± 3° DIM. ± 0.25 (± .01)

DRW. NO.: SDA-73101-0040 REV B

TITLE :
 75 OHMS BNC R/A PCB
 RECEPTACLE (DIE CAST)